

# Prova d'ingresso Triennio Jazz

## Bologna

### Costruire le seguenti scale

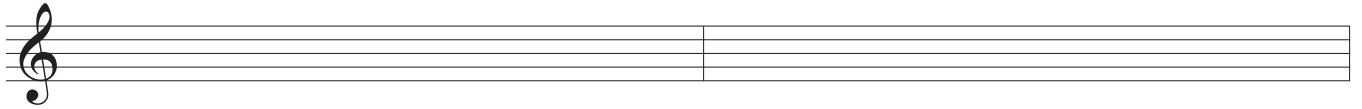
Bb maggiore

D minore melodica



F minore armonica

E diminuita semitono-tono



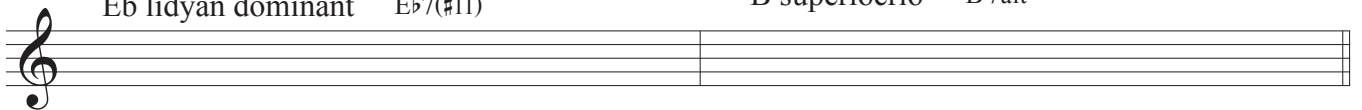
Ab esatonale

D misolidia D 13



Eb lidyan dominant Eb7(#11)

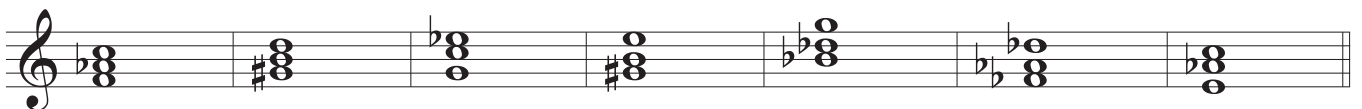
B superlocroio B7alt




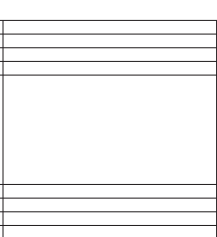
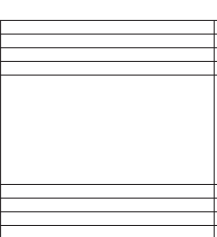
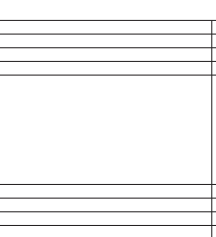
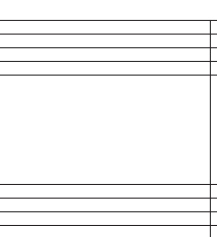
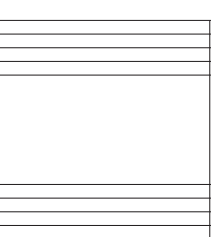
### Identificare gli intervalli



### Identificare le triadi (anche rivoltate)



**Costruire i seguenti accordi**

Dmin7	G13	D $\flat$ dim7	F7sus	B $\flat$ maj7	C7alt
					

**Scrivere gli accordi di un blues nella tonalità di Fa maggiore.**